

SERAC1 Antibody (N-term)
Purified Rabbit Polyclonal Antibody (Pab)
Catalog # AP20780a**Specification**

SERAC1 Antibody (N-term) - Product Information

Application	WB,E
Primary Accession	O96JX3
Reactivity	Human
Host	Rabbit
Clonality	Polyclonal
Isotype	Rabbit IgG
Calculated MW	74147

SERAC1 Antibody (N-term) - Additional Information**Gene ID** 84947**Other Names**

Protein SERAC1, Serine active site-containing protein 1, SERAC1

Target/Specificity

This SERAC1 antibody is generated from a rabbit immunized with a KLH conjugated synthetic peptide between 41-64 amino acids from the N-terminal region of human SERAC1.

Dilution

WB~~1:1000

E~~Use at an assay dependent concentration.

Format

Purified polyclonal antibody supplied in PBS with 0.09% (W/V) sodium azide. This antibody is purified through a protein A column, followed by peptide affinity purification.

Storage

Maintain refrigerated at 2-8°C for up to 2 weeks. For long term storage store at -20°C in small aliquots to prevent freeze-thaw cycles.

Precautions

SERAC1 Antibody (N-term) is for research use only and not for use in diagnostic or therapeutic procedures.

SERAC1 Antibody (N-term) - Protein Information**Name** SERAC1

Function Plays an important role in the phosphatidylglycerol remodeling that is essential for both mitochondrial function and intracellular cholesterol trafficking. May catalyze the remodeling of phosphatidylglycerol and be involved in the transacylation-acylation reaction to produce

phosphatidylglycerol-36:1. May be involved in bis(monoacylglycerol)phosphate biosynthetic pathway.

Cellular Location

Membrane; Single-pass membrane protein. Endoplasmic reticulum. Mitochondrion. Note=Localizes at the endoplasmic reticulum and at the endoplasmic reticulum-mitochondria interface

Tissue Location

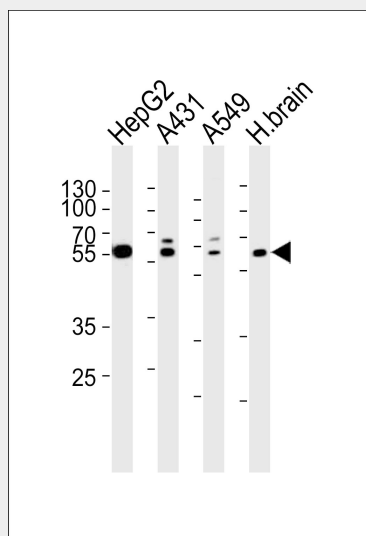
Widely expressed, with predominant expression in fetal skeletal muscle and adult brain. In the brain, highest levels are found in the frontal and occipital cortices, cerebellum and hippocampus.

SERAC1 Antibody (N-term) - Protocols

Provided below are standard protocols that you may find useful for product applications.

- [Western Blot](#)
- [Blocking Peptides](#)
- [Dot Blot](#)
- [Immunohistochemistry](#)
- [Immunofluorescence](#)
- [Immunoprecipitation](#)
- [Flow Cytometry](#)
- [Cell Culture](#)

SERAC1 Antibody (N-term) - Images



Western blot analysis of lysates from HepG2, A431, A549 cell line and human brain tissue lysate (from left to right), using SERAC1 Antibody (N-term) (Cat. #AP20780a). AP20780a was diluted at 1:1000 at each lane. A goat anti-rabbit IgG H&L (HRP) at 1:5000 dilution was used as the secondary antibody. Lysates at 35ug per lane.

SERAC1 Antibody (N-term) - Background

Plays an important role in the phosphatidylglycerol remodeling that is essential for both mitochondrial function and intracellular cholesterol trafficking. May catalyze the remodeling of phosphatidylglycerol and be involved in the transacylation-acylation reaction to produce phosphatidylglycerol-36:1. May be involved in bis(monoacylglycerol)phosphate biosynthetic

pathway.

SERAC1 Antibody (N-term) - References

Ota T.,et al.Nat. Genet. 36:40-45(2004).
Mungall A.J.,et al.Nature 425:805-811(2003).
Tort F.,et al.Mol. Genet. Metab. 110:73-77(2013).
Wortmann S.B.,et al.Nat. Genet. 44:797-802(2012).